

PUBLIC SERVICES WELCOMING MIGRANTS

Case study SSR/SWEDEN

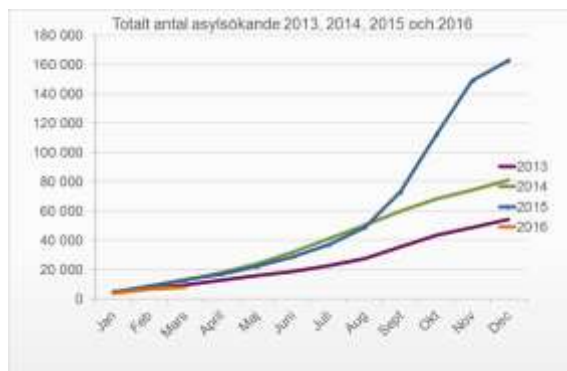


Akademikerförbundet SSR



Akademikerförbundet SSR

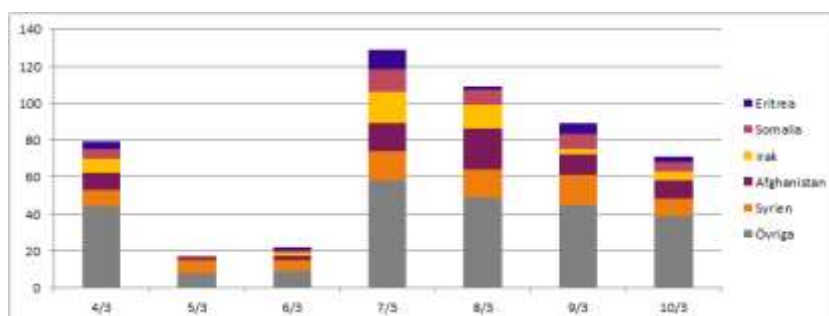
Migration/refugee situation in Sweden



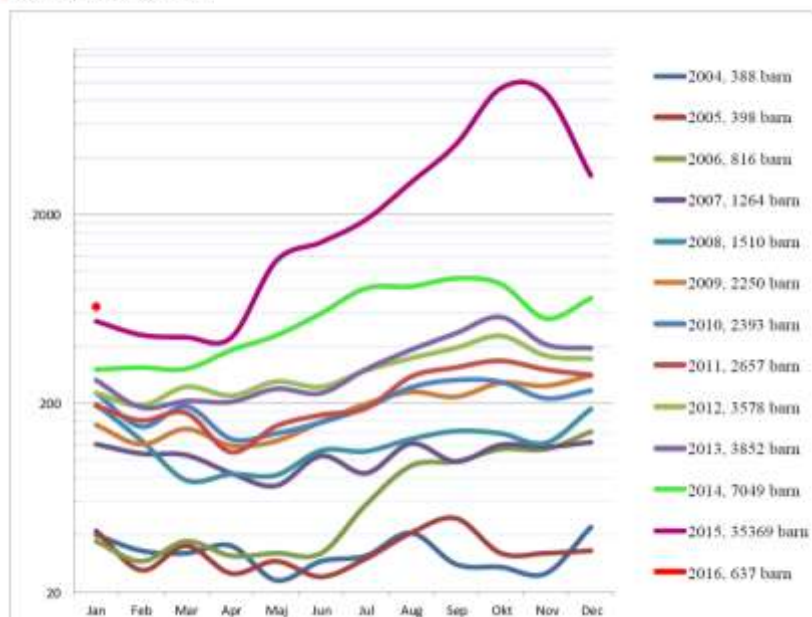
Migration/refugee situation in Sweden




Migration/refugee situation in Sweden

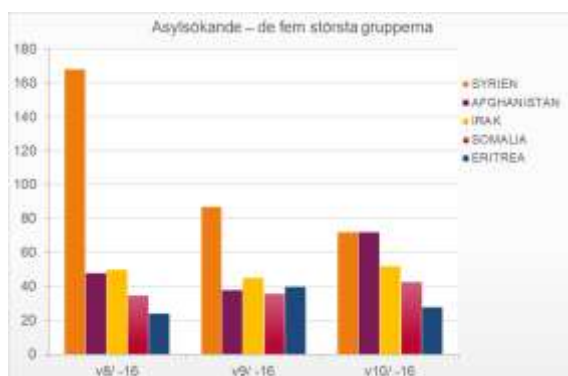


 Akademikerförbundet SSR



 Akademikerförbundet SSR

Migration/refugee situation in Sweden



Challenges

- Organising the reception facilities
- Finding beds and housing
- Quality and security
- Employees with the required skills and education
- Finding the right jobs for the migrant

Organisation the reception facilities



Finding beds



Finding beds, privatisation and its impact



Quality and security



Capacity of public service and public service worker welcoming migrants

- There is capacity, it just need to be organised
- There is a demand from the labour market



Trade Union Actions at national.

- Fight racism and xenophobia.
- European march

- Take part in triparteid talks
- Lobbying the Government
- Fast track
- Help in recruiting
- Trade Union Centre for Undocumented Migrants



Fast Track

- **Tripartite talks have been held in the following industries:** Pharmacies, tourism, health and medical care, local government, industry, health and social care, transport, painting, timber and graphics companies, real estate, energy and electronics, building, forestry and agriculture.



Fast track components:

- Swedish language training will start as early as at the asylum centres.
- Early assessment of the experience, skills and motivation of newly arrived immigrants.
- Validation and assessment of education and professional skills according to industry-specific requirements.
- Vocational and study guidance.
- Fast track and employment matching.
- Swedish language training that is relevant for the professional area.
- Supplementary educational initiatives as necessary.
- Language training/supplementary courses will be combined with a work placement or job.
- Language support, supervisors and mentors at the workplaces.



Trade Union Center for Undocumented Migrants, member of PICUM.





Gender dimension (women, children and families)

- Not safe for women
- Not safe for children
- End of 2015 and so far 2016 men bring there families.



Access of migrants to public services including right to health

- Asylum seekers do have full access to health care.
- Different rules for undocumented. Children have the right, but adults only for "care that cant wait"

Challenge in policy

- Sending Signals to the world
- TUT, Temporary residence permit
- Low paid jobs

